

# ZK-LPR Car ID

## License Plate Recognition Cameras



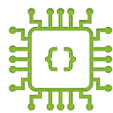
**ZK-LPR Car ID is based on BL-852Q38A-LP and DL-852Q28B-LP, ZKTeco's high-performance cameras with embedded License Plate Recognition application.**

The license plate recognition algorithm is executed inside the camera avoiding the use of computers in access control, tolling and weighing scenarios. The License Plate Recognition engine can identify license plates from over 80 countries around the world.

ZK-LPR Car ID is next step in ZKTeco's access control system technology for an efficient and simple vehicle access management, delivering, faster & easier set-up and allowing customers to achieve high performance with lower installation, maintenance and off-site programming costs.



Allows integration with server / cloud based solutions



LPR software embedded in the camera



Access lists for multiple events configuration



Scalable solution with primary / secondary cameras



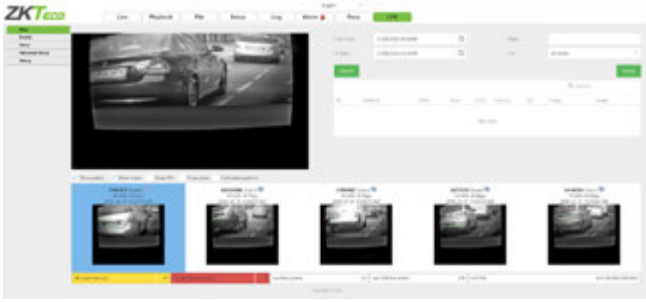
OCR conversion directly in the camera



Supports 3rd party integration (Milestone and Lenel)



Identifies plates from more than 80 countries



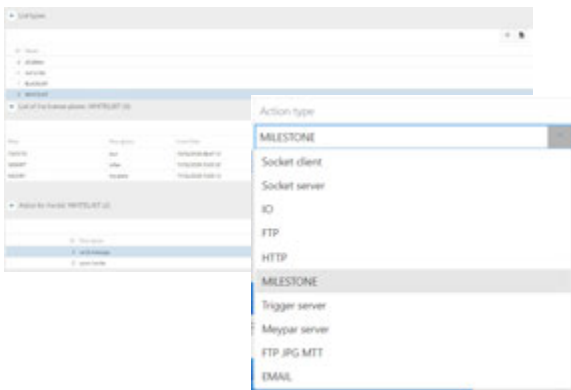
## Live View

ZK-LPR Car ID allows real-time monitoring of alphanumeric license plates captured by the camera, issuing reports with plate recognition data. Optimized memory storage available.

## Monitor and review license plate recognition history data

The licences plate recognition history data can be stored for retrieval and review. Different filters can be enabled for this purpose, such as: Date, time, country of origin.

ID	Timestamp	Plate	Lane	Conf.	Country	City	Image	Image
61146	11:14:53.151 21/02/2020	486FYS		99.90	Spain			LPR
61147	11:15:18.263 21/02/2020	894KVP		99.90	Spain			LPR
61148	11:15:27.177 21/02/2020	043200V		85.01	Spain			LPR
61149	11:15:30.812 21/02/2020	4897BK		99.90	Spain			LPR
61150	11:15:42.473 21/02/2020	4694XM		98.91	Spain			LPR



## Configure lists and linkage actions

The system allows to create an unlimited number of event lists and assign different actions like, for example, opening/closing barriers sending a signal via HTTP or simple integrations with 3rd party companies like Milestone or Lenel. All linkages can be activated by limited time periods and lists can be exported or imported from other devices.

## LPR Configuration

The system supports plate detection from different regions and countries. Country license plate detection is configurable as well as the performance of the camera according to the environment.

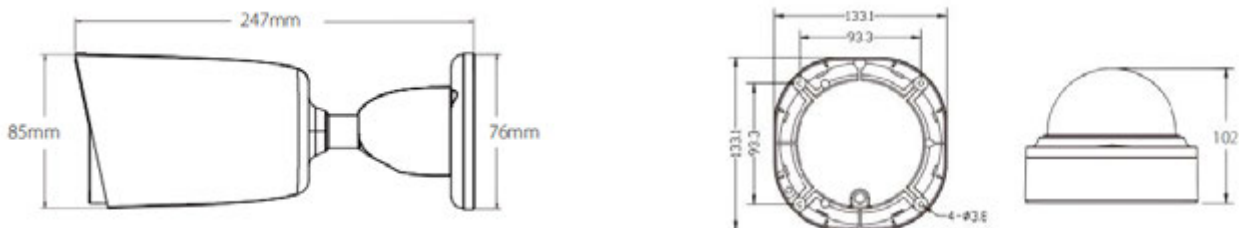




## Recognition features

- 98% or bigger reliability rating on LPR
- Recognition of 2-line vehicle plates
- Duplicated license plate filtering
- Access Control Linkage with ZKTeco Parking barriers
- LPR from vehicles in movement (up to 20 km/h) or stopped (Stop & Go).

## Dimensions



## Supported Countries

Spain	Netherlands	Austria	Brazil	Costa Rica	Vietnam	Abu Dhabi	Nigeria
Portugal	Estonia	Slovenia	Argentina	Dominican Republic	Indonesia	Dubai	Uganda
France	Bosnia and Herzegovina	Hungary	Mexico	Honduras	Philippines	Azerbaijan	Burkina Faso
Italy	Romania	Czech Republic	Ecuador	Nicaragua	Malaysia	Kuwait	Tanzania
United Kingdom	Belgium	Belarus	Venezuela	Bermuda	Singapore	Qatar	Kenya
Greece	Norway	Ukraine	Peru	Trinidad and Tobago	Israel	Saudi Arabia	Botswana
Ireland (ROI)	Denmark	Croatia	El Salvador	Barbados	Lebanon	Oman	Ghana
Germany	Sweden	Lithuania	Bolivia	Jamaica	Hong-Kong	South Africa	Cameroon
Andorra	Finland	Latvia	Uruguay	Russia	Macau	Morocco	EEUU
Poland	Gibraltar	Chile	Guatemala	Taiwan	India	Tunisia	Canada
Bulgaria	Switzerland	Colombia	Panama	Turkey	Bahrain	Angola	Australia
			Paraguay			Senegal	New Zealand

## Specifications

Camera					
	BL-852Q38A-LP	DL-852Q28B-LP		BL-852Q38A-LP	DL-852Q28B-LP
Image Sensor	1/2.8" Sony STAVIS CMOS		IR LED No.	2 (Smart IR)	
Effective Pixels	1920* 1080		IR Distance	50m	
Min. Illumination	Color: 0.001Lux@F1.7 (AGC ON)		S/N Ratio	> 52dB	
Flash	512 Mb	1Gb / 4Gb			
Lens					
	BL-852Q38A-LP	DL-852Q28B-LP		BL-852Q38A-LP	DL-852Q28B-LP
Lens Type	Motorized		Aperture	F1.7 ~ F3.0	
Mount Type	Board-in		FOV	38° ~ 107°	
Focal Length	3.35mm ~ 10.05mm		Optical Zoom	3X	
Video					
	BL-852Q38A-LP	DL-852Q28B-LP		BL-852Q38A-LP	DL-852Q28B-LP
Compression	H.265+/H.265/H.264		WDR	TWDR	
Resolution	1080P(1920*1080)/1.3MP(1280*960)/720P(1280*720) Q720P(640*360)/CIF(352*288)		Day/Night	Support	
Bitrate Control	CBR/VBR		White Balance	Support	
Bitrate	H.265+:1536Kbps-7Mbps H.265:1536Kbps-7Mbps H.264:1792Kbps-9Mbps		Defog	Support	
Multi-Streaming	Main Stream:1080P@25fps		Noise Reduction	3D DNR	2D/3D DNR
	Sub Stream: Q720P@25fps		Mirror/Flip	Support	
	N/A		Corridor Mode	Support	
Motion Detection	Support		HLC	Support	
Digital Zoom	Support		BLC	N/A	Support
Audio Compression	G7.11u		ROI	4 areas	
Privacy Mask	5 areas		Anti-flicker	Support	
Network					
	BL-852Q38A-LP	DL-852Q28B-LP		BL-852Q38A-LP	DL-852Q28B-LP
Protocol	TCP/IP, UDP, HTTP, DHCP, RTP, DDNS, NTP, PPPoE, UPnP, SMTP		Management Software(VMS)	AntarVis 2.0, ZKBioSecurity IVS, ZKBioAccess IVS	
Interoperability	ONVIF, Profile S SDK, API		Operation System	Windows	
Max. Online Users	5		Mobile APP	AntarView Pro	
Web Browser	IE/Firefox/Chrome/Safari		P2P Cloud Service	Support	
Interface					
	BL-852Q38A-LP	DL-852Q28B-LP		BL-852Q38A-LP	DL-852Q28B-LP
Ethernet	1 RJ-45 port (10/100Mbps)		Reset Button	Support	
Audio I/O	1 in / 1 out		Micro-SD Slot	64GB (card included)	Support (Max 128GB)
Alarm I/O	2 in / 1 out		ANR	Support	
RS485	Support		USB	N/A	
General					
	BL-852Q38A-LP	DL-852Q28B-LP		BL-852Q38A-LP	DL-852Q28B-LP
Power Supply	PoE (IEEE802.3af), DC 12V±10%		Working Humidity	10% ~ 90%	
Power Consumption	< 3W		Working Temperature	-30°C ~ +60 °C	
Ingress Protection	IP 67		Net Weight	0.50 kg	
Dimensions	247(L)*85(W)*76(H)mm	Ø102*93.2 mm	Gross Weight	0.64 kg	0.70kg